

PART OF S.E. 1/4  
SECTION 32 T.7N.,R.2W., S.L.B.&M.

IN PLAIN CITY

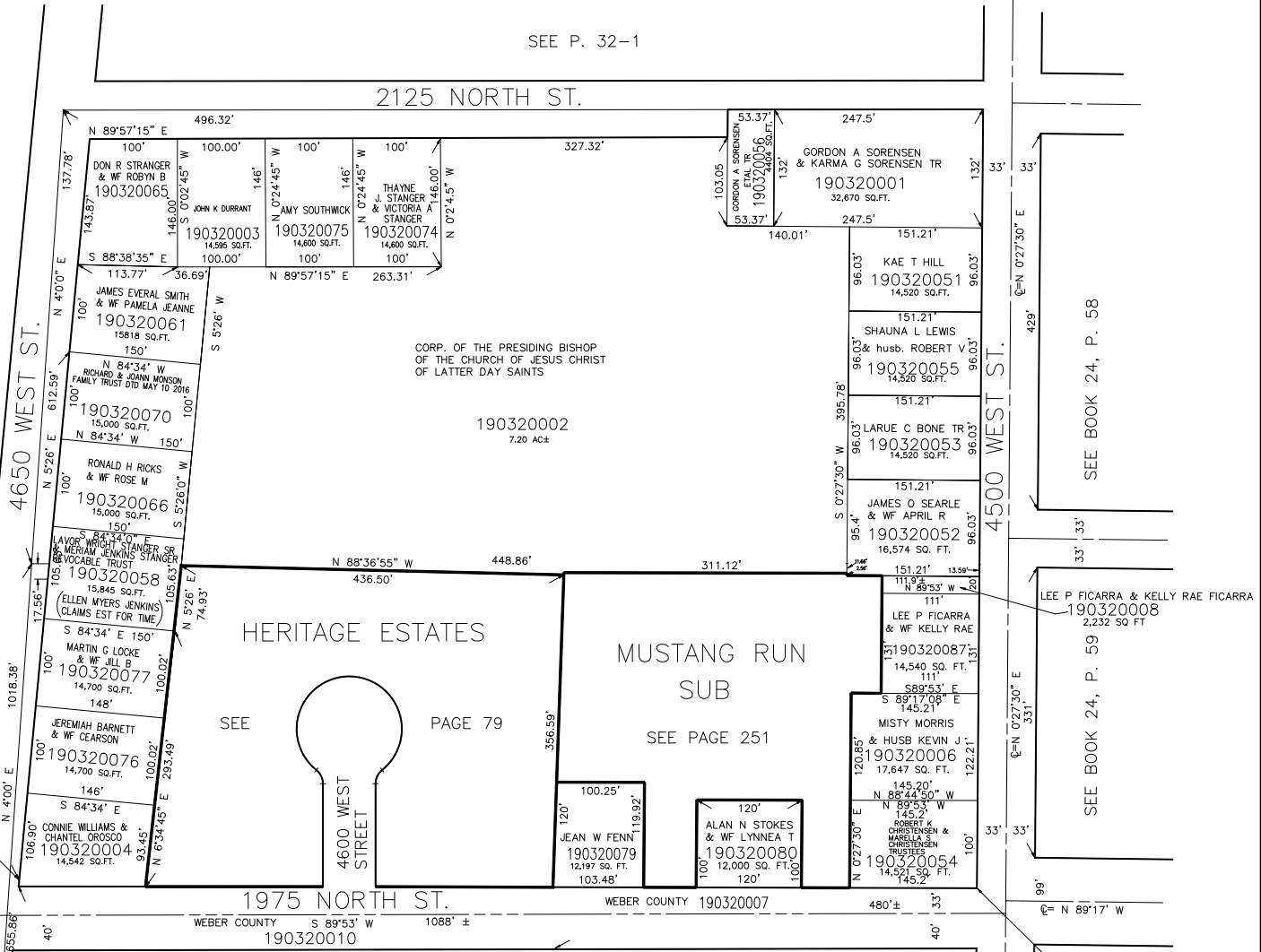
TAXING UNIT: 21

SCALE 1" = 100'

PREFIX : 19-032

SEE P. 32-1

2125 NORTH ST.



CORP. OF THE PRESIDING BISHOP  
OF THE CHURCH OF JESUS CHRIST  
OF LATTER DAY SAINTS

190320002  
7.20 AC±

HERITAGE ESTATES

MUSTANG RUN  
SUB

SEE PAGE 79

SEE PAGE 251

1975 NORTH ST.

WEBER COUNTY S 89°53' W 1088' ±  
190320010

SEE P. 32

SEE BOOK 24, P. 58

SEE BOOK 24, P. 59

W.1320' N.6369'  
E.4.18FT FROM THE S.E. COR.  
OF S.E.1/4 OF SEC.32.

SEE P. 33

(S89°54'20"E  
7.43')

(174.90')

S.W. COR. OF S.E.1/4 OF SEC.32, T.7N., R.2W.